



Multi Line

Trustworthy toolholding solutions

Product catalog

REGO-FIX 

Product offering	4
------------------	---

1.0 ML holders**Minimize runout – boost productivity****7**

1.1 SK interface		1.3 HSK interface	
1.1.1 Weldon end mill holders SK/WD	8	1.3.1 Weldon end mill holders HSK/WD	21
1.1.2 Universal shell/face mill holders SK/KFD	10	1.3.2 Universal shell/face mill holders HSK/KFD	24
1.1.3 Drill chucks SK/KBF	11	1.3.3 Drill chucks HSK-A/KBF	26
1.1.4 Morse taper holders SK/MK	12	1.3.4 Morse taper holders HSK-A/MK	27
1.2 BT interface		1.4 REGO-FIX CAPTO interface <small>licensed by Sandvik Coromant</small>	
1.2.1 Weldon end mill holders BT/WD	14	1.4.1 End mill holders REGO-FIX C/WD	28
1.2.2 Universal shell/face mill holders BT/KFD	16	1.4.2 Shell mill arbors REGO-FIX C/MA	31
1.2.3 Drill chucks BT/KBF	17		
1.2.4 Morse taper holders BT/MK	18	1.5 Milling Chucks	34




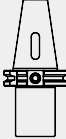
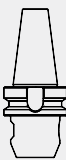

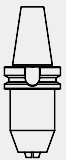


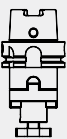




2.0 ML reduction sleeves**Reduction sleeves for hydro chucks****37**


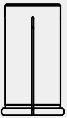
2.1 Reduction sleeves HS and HS-CF	38
------------------------------------	----

3.0 Multi Line accessories	40
----------------------------	----

4.0 Technical information	50
---------------------------	----

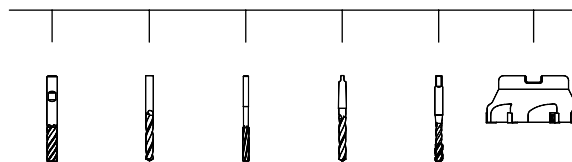
Experience Multi Line

SK holders				BT holders				HSK holders				CAPTO holders	
SK/ WD	SK/ KFD	SK/ KBF	SK/ MK	BT/ WD	BT/ KFD	BT/ KBF	BT/ MK	HSK/ WD	HSK/ KFD	HSK/ KBF	HSK/ MK	C/WD	C/MA
													
page 8	page 10	page 11	page 12	page 14	page 16	page 17	page 18	page 21	page 24	page 26	page 27	page 28	page 31

Reduction sleeves for hydro chucks	
HS	HS-CF with coolant flush
	
page 37	page 37

For wrenches and other accessories
please refer to page 40.

Suitable for carbide or HSS milling cutter in all
shank forms (Weldon, Whistle-Notch, etc.)





At a glance

Providing solutions for cutting-edge toolholding

Our holistic toolholding systems excel with extraordinary reliability, high precision and outstanding quality.

Pioneering spirit Fritz Weber, a Swiss master craftsman, tapped into the promising optimism in the 1950s and founded a small business called Fritz Weber Feinmechanik und Werkzeugbau. With his innovative spirit and stern determination, Fritz Weber gradually expanded his range of products. The company, now called REGO-FIX AG, achieved international recognition in 1972 with the invention of the ER clamping system, changing the toolholding industry forever. The ER System, made in Switzerland, is an industrial standard clamping element. It set the industry standard and even became DIN Standard (DIN 6499) in 1993. Today, the ER collet made by REGO-FIX is still the most used clamping collet worldwide.

Shaping the future REGO-FIX is an international family-owned company that is run by the sons of Fritz Weber. With its over 220 employees, REGO-FIX manufactures and markets high-precision toolholding systems worldwide. Headquartered in Tenniken, Switzerland, the company has established itself

as one of the leading manufacturers of toolholding systems and enjoys an excellent industry-wide reputation. Through its close network of distributors and subsidiaries in the US and China, REGO-FIX is strategically well positioned and possesses a worldwide presence in key markets. With groundbreaking product inventions, REGO-FIX developed from a small company to a global solution provider for cutting-edge toolholding systems. At the core of every product lies an aim for machining excellence and a passion for precision.

Cradle of precision REGO-FIX manufactures its products in Switzerland to fit highest quality standards. The products are used in the fields of automotive, aerospace, medical engineering, watchmaking, telecommunications and also in the die and mold industry.



Multi Line

Trustworthy toolholding solutions

For highest precision and best results, the entire machining system counts. Therefore, our components are carefully machined for optimum fit and accuracy. This guarantees the best runout and balance.

KFD



Universal shell/face mill holder

Weldon



End mill holder

KBF



Drill chuck

MK



Morse taper holder

Three systems – one brand

Our brand unites three different toolholding systems. Each system has different strengths to fit your machining needs, but at the heart of each system lies our aim for toolholding excellence.

powRgrip® System

For high-end machining with a total system **TIR ≤ 0.0001" (3 μm) at 3xD**

PG colletholders

Taper accuracy AT3

Surface finish
max. Ra 0.25

High transferable torque
up to 1,100 Nm

PG collets

Clamping range
from 0.0079" up to 1"

Special surface treatment
ensures longevity

Clamps all shanks
with tolerance h6

Vibration dampening
for high RPM

A holistic system approach

All parts are designed for exclusive fit to ensure toolholding excellence.

ER System

Our ideal system for standard machining

ER colletholders

Runout TIR ≤ 0.0001" (3 μm)

Taper accuracy AT3

Surface finish max. Ra 0.25

Factory balanced

ER collets

Wide clamping range: from ER 8 up to ER 50 and
for diameters from 0.0079" up to 1.375"

Clamping capacity 0.0197" to 0.0787"

Runout TIR ≤ 0.0004" (10 μm) at 3xD for ER standard

Runout TIR ≤ 0.0002" (5 μm) at 3xD for ER-UP

ER clamping nuts

Collet-locking system

Balanced by design

Special surface treatment improves transferable torque
and protects against corrosion

micRun® System

Total system TIR $\leq 0.0001''$ (3 μm) at 3xD

MR colletholders

Taper accuracy AT3

Polished surface for improved performance

Balanced for high RPM

Vibration dampening

MR collets

Clamping range from 0.0394" mm to 0.7874"

Nominal diameter shanks h11

MR clamping nuts

Collet-locking system

Balanced by design

Grooveless design for higher RPM

Freewheel wrench head

A holistic system approach

All parts are designed for exclusive fit to ensure toolholding excellence.

SK holders

SK/
WD



page 8

SK/
KFD



page 10

SK/
KBF



page 11

SK/
MK



page 12

BT holders

BT/
WD



page 14

BT/
KFD



page 16

BT/
KBF



page 17

BT/
MK



page 18

HSK holders

HSK/
WD



page 21

HSK/
KFD



page 24

HSK/
KBF



page 26

HSK/
MK



page 27

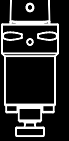
CAPTO holders

C/WD



page 28

C/MA



page 31



Minimize runout – boost productivity

Experience outstanding quality We at REGO-FIX know how to minimize your runout and boost your productivity. This is why we designed our ML holders to fulfill diverse criteria all crucial for achieving machining excellence.

The outstanding design paired with our experienced engineering make the ML products a solid option for traditional machining applications. Further increases in machining productivity is possible by incorporating our matching items.

The special design of the Multi Line reduction sleeves allows an efficient use of coolant through cutting tools. This self-sealing system works with the most common hydraulic expansion chucks. What you see is what you get: all our products bear the REGO-FIX triangle – our seal for outstanding Swiss quality.



Swiss quality standard

Our products marked Swiss made are manufactured at our headquarters in Tenniken, Switzerland.

Weldon end mill holders SK/WD

Universally suitable for different machining applications.

DIN 69871 / DIN ISO 7388-1

Features of end mill holders (Weldon)

Runout TIR $\leq 0.0001''$ (3 μm)

Measured from inner bore to outer taper.

Taper accuracy AT3

Better spindle-to-holder fit and accuracy.

Side locking screw

For highest transferable torque.

Coolant supply

All collets with form A+AD can be used for cooling. Form A+AD delivers the coolant supply through the taper.

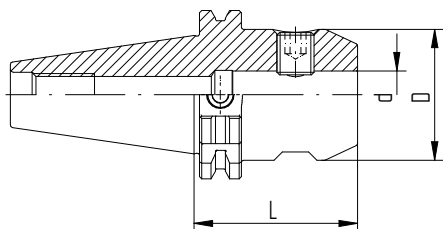
ID chip hole

In accordance with DIN 69873 for 10 mm diameter.

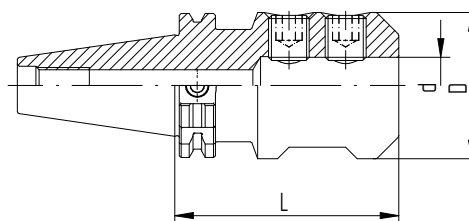


Type	Part no.	Dimensions [mm]			Form A+AD	Drawing
		D	d	L		
SK 40						
SK 40 / WD 6 x 050	2240.30620	25	6	50	•	1
SK 40 / WD 8 x 050	2240.30820	28	8	50	•	1
SK 40 / WD 10 x 050	2240.31020	35	10	50	•	1
SK 40 / WD 12 x 050	2240.31220	42	12	50	•	1
SK 40 / WD 14 x 050	2240.31420	44	14	50	•	1
SK 40 / WD 16 x 063	2240.31630	48	16	63	•	1
SK 40 / WD 18 x 063	2240.31830	50	18	63	•	1
SK 40 / WD 20 x 063	2240.32030	52	20	63	•	1
SK 40 / WD 25 x 100	2240.32560	65	25	100	•	2
SK 40 / WD 32 x 100	2240.33260	72	32	100	•	2
SK 50						
SK 50 / WD 6 x 063	2250.30630	25	6	63	•	1
SK 50 / WD 8 x 063	2250.30830	28	8	63	•	1
SK 50 / WD 10 x 063	2250.31030	35	10	63	•	1
SK 50 / WD 12 x 063	2250.31230	42	12	63	•	1
SK 50 / WD 14 x 063	2250.31430	44	14	63	•	1
SK 50 / WD 16 x 063	2250.31630	48	16	63	•	1
SK 50 / WD 18 x 063	2250.31830	50	18	63	•	1
SK 50 / WD 20 x 063	2250.32030	52	20	63	•	1
SK 50 / WD 25 x 080	2250.32550	65	25	80	•	2
SK 50 / WD 32 x 100	2250.33260	72	32	100	•	2
SK 50 / WD 40 x 100	2250.34060	80	40	100	•	2

Included in delivery: End mill holder and lock screw.



Drawing 1 SK / WD

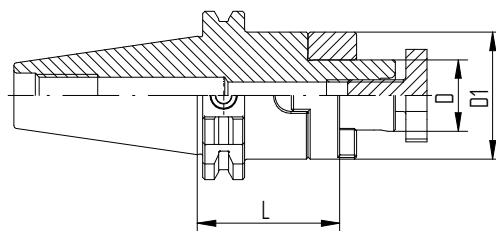


Drawing 2 SK / WD

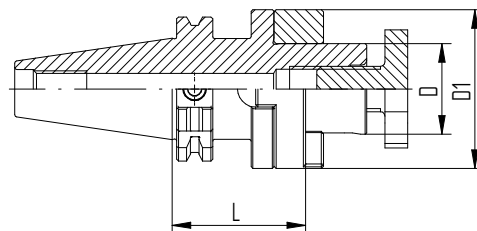
Type	Part no.	Dimensions [mm]				Form A+AD	Drawing	Accessory
		D	D1	L	Wrench			
SK 40								
SK 40 / KFD 16 x 055	2240.41630	16	32	55	•	1	FDS 16	
SK 40 / KFD 22 x 055	2240.42230	22	40	55	•	1	FDS 22	
SK 40 / KFD 27 x 055	2240.42730	27	48	55	•	1	FDS 27	
SK 40 / KFD 32 x 060	2240.43240	32	58	60	•	2	FDS 32	
SK 40 / KFD 40 x 060	2240.44040	40	70	60	•	2	FDS 40	
SK 50								
SK 50 / KFD 16 x 055	2250.41630	16	32	55	•	1	FDS 16	
SK 50 / KFD 22 x 055	2250.42230	22	40	55	•	1	FDS 22	
SK 50 / KFD 27 x 055	2250.42730	27	48	55	•	1	FDS 27	
SK 50 / KFD 32 x 055	2250.43230	32	58	55	•	1	FDS 32	
SK 50 / KFD 40 x 055	2250.44030	40	70	55	•	1	FDS 40	
SK 50 / KFD 50 x 070	2250.45050	50	90	70	•	2	FDS 50	

Included in delivery: Universal shell/face mill holder, lock screw, feather key and drive ring.

For details on our FDS wrenches, please refer to page 42.



Drawing 1 SK / KFD



Drawing 2 SK / KFD

Type	Part no.	Dimensions [mm]				
		D	d	L	Form A	Form A+AD
SK 30						
SK 30 / KBF 1 – 13 mm	2230.50100	50	1–13	111	•	–
SK 40						
SK 40 / KBF 1 – 13 mm	2240.50103	50	1–13	90	–	•
SK 50						
SK 50 / KBF 1 – 13 mm	2250.50103	50	1–13	106	–	•

Included in delivery: Drill chuck and Allen key™.

Drill chucks SK / KBF

Features and benefits

Clamping range

1–13 mm

Maximum runout

0.03 mm

Maximum tightening torque

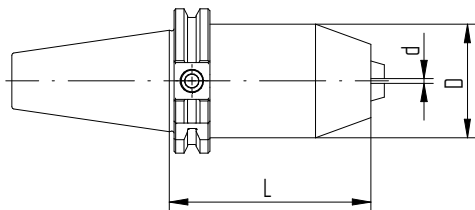
20 Nm

Clamping force (at 20 Nm tightening torque)

80 Nm

Maximum rpm

35,000 min⁻¹



SK / KBF

Morse taper holders SK / MK

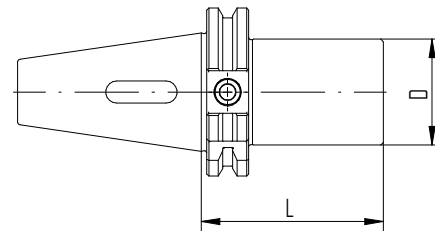
SK / MK

DIN 69871

DIN ISO 7388-1

1.1.4 SK / MK

Type	Part no.	Dimensions [mm]	
		D	L
SK 40			
SK 40 / MK 1 x 050	2240.80110	25	50
SK 40 / MK 2 x 050	2240.80210	32	50
SK 40 / MK 3 x 070	2240.80320	40	70
SK 40 / MK 4 x 095	2240.80430	48	95



Customers from all around the world rely on Swiss-made REGO-FIX products. From Switzerland, we deliver to customers in fast-paced industries with the highest demands for precision.

We offer competitive solutions



Weldon end mill holders BT/WD

Universally suitable different machining applications, the BT interface collets cater to different machining needs.

MAS 403 / JIS B 6339 / DIN ISO 7388-2

Features of end mill holders (Weldon)

Runout TIR $\leq 0.0001''$ (3 μm)

Measured from inner bore to outer taper.

Taper accuracy AT3

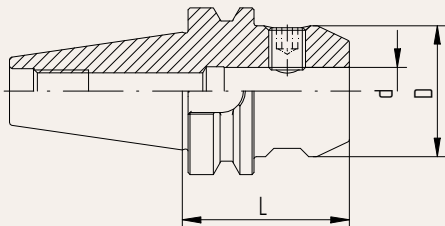
Better spindle-to-holder fit and accuracy.

Side locking screw

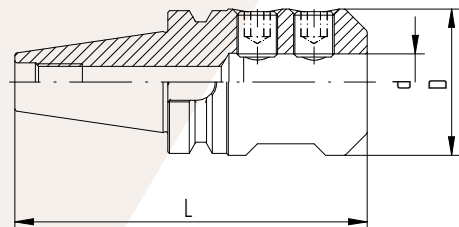
For highest transferable torque.

Coolant supply

All collets with form A+AD can be used for cooling. Form A+AD delivers the coolant supply through the taper.



Drawing 1 BT / WD



Drawing 2 BT / WD

Weldon end mill holders BT/WD

BT/WD

MAS 403

JIS B 6339

DIN ISO 7388-2

Type	Part no.	Dimensions [mm]			Form A+AD	Drawing
		D	d	L		
BT 30						
BT 30 / WD 6 x 050	2130.30620	25	6	50	•	1
BT 30 / WD 8 x 050	2130.30820	28	8	50	•	1
BT 30 / WD 10 x 050	2130.31020	35	10	50	•	1
BT 30 / WD 12 x 050	2130.31220	42	12	50	•	1
BT 30 / WD 14 x 050	2130.31420	44	14	50	•	1
BT 30 / WD 16 x 063	2130.31630	48	16	63	•	1
BT 30 / WD 18 x 063	2130.31830	50	18	63	•	1
BT 30 / WD 20 x 063	2130.32030	52	20	63	•	1
BT 40						
BT 40 / WD 6 x 050	2140.30620	25	6	50	•	1
BT 40 / WD 8 x 050	2140.30820	28	8	50	•	1
BT 40 / WD 10 x 063	2140.31030	35	10	63	•	1
BT 40 / WD 12 x 063	2140.31230	42	12	63	•	1
BT 40 / WD 14 x 063	2140.31430	44	14	63	•	1
BT 40 / WD 16 x 063	2140.31630	48	16	63	•	1
BT 40 / WD 18 x 063	2140.31830	50	18	63	•	1
BT 40 / WD 20 x 063	2140.32030	52	20	63	•	1
BT 40 / WD 25 x 090	2140.32550	65	25	90	•	2
BT 40 / WD 32 x 100	2140.33260	72	32	100	•	2
BT 50						
BT 50 / WD 6 x 063	2150.30630	25	6	63	•	1
BT 50 / WD 8 x 063	2150.30830	28	8	63	•	1
BT 50 / WD 10 x 063	2150.31030	35	10	63	•	1
BT 50 / WD 12 x 080	2150.31250	42	12	80	•	1
BT 50 / WD 14 x 080	2150.31450	44	14	80	•	1
BT 50 / WD 16 x 080	2150.31650	48	16	80	•	1
BT 50 / WD 18 x 080	2150.31850	50	18	80	•	1
BT 50 / WD 20 x 080	2150.32050	52	20	80	•	1
BT 50 / WD 25 x 100	2150.32560	65	25	100	•	2
BT 50 / WD 32 x 105	2150.33260	72	32	105	•	2
BT 50 / WD 40 x 110	2150.34060	80	40	110	•	2

Included in delivery: End mill holder and lock screw.

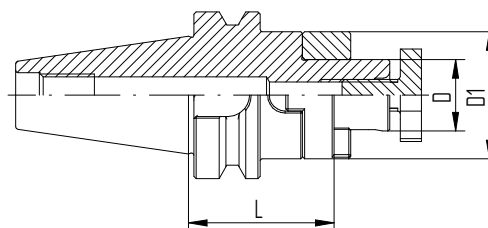
Universal shell/face mill holders BT/KFD

BT /KFD
MAS 403
JIS B 6339
DIN ISO 7388-2

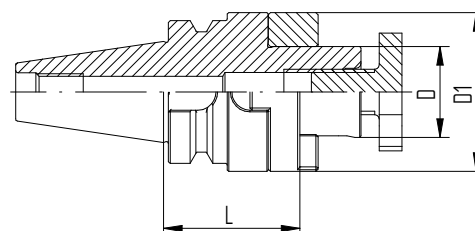
Type	Part no.	Dimensions [mm]					Drawing	Accessory
		D	D1	L	Form A+AD	Wrench		
BT 30								
BT 30 / KFD 16 x 045	2130.41620	16	32	45	•	1	FDS 16	
BT 30 / KFD 22 x 047	2130.42220	22	40	47	•	1	FDS 22	
BT 30 / KFD 27 x 049	2130.42720	27	48	49	•	2	FDS 27	
BT 30 / KFD 32 x 053	2130.43230	32	58	53	•	2	FDS 32	
BT 40								
BT 40 / KFD 16 x 055	2140.41630	16	32	55	•	1	FDS 16	
BT 40 / KFD 22 x 055	2140.42230	22	40	55	•	1	FDS 22	
BT 40 / KFD 27 x 055	2140.42730	27	48	55	•	1	FDS 27	
BT 40 / KFD 32 x 060	2140.43240	32	58	60	•	1	FDS 32	
BT 40 / KFD 40 x 060	2140.44040	40	70	60	•	2	FDS 40	
BT 50								
BT 50 / KFD 16 x 070	2150.41630	16	32	70	•	1	FDS 16	
BT 50 / KFD 22 x 070	2150.42230	22	40	70	•	1	FDS 22	
BT 50 / KFD 27 x 070	2150.42750	27	48	70	•	1	FDS 27	
BT 50 / KFD 32 x 070	2150.43250	32	58	70	•	1	FDS 32	
BT 50 / KFD 40 x 070	2150.44050	40	70	70	•	1	FDS 40	
BT 50 / KFD 50 x 070	2150.45050	50	90	70	•	1	FDS 50	

For details on our FDS wrenches, please refer to page 40.

Included in delivery: Universal shell/face mill holder, lock screw, feather key and drive ring.



Drawing 1 BT / KFD



Drawing 2 BT / KFD

Type	Part no.	d	Dimensions [mm]			
			D	L	Form A	Form A+AD
BT 30						
BT 30 / KBF 1 – 13 mm	2130.50100	1–13	50	95	•	–
BT 40						
BT 40 / KBF 1 – 13 mm	2140.50103	1– 13	50	98	–	•
BT 50						
BT 50 / KBF 1 – 13 mm	2150.50103	1– 13	50	100	–	•

Included in delivery: Drill chuck and Allen key™.

Drill chucks BT /KBF

Features and benefits

Clamping range

1–13 mm

Maximum runout

0.03 mm

Maximum tightening torque

20 Nm

Clamping force (at 20 Nm tightening torque)

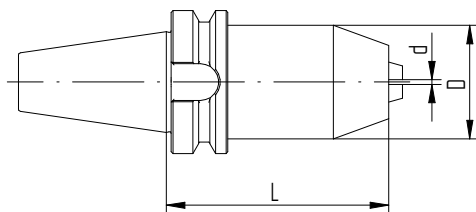
80 Nm

Maximum rpm

35,000 min⁻¹



BT / KBF



BT / KBF

Morse taper holders BT / MK

BT / MK

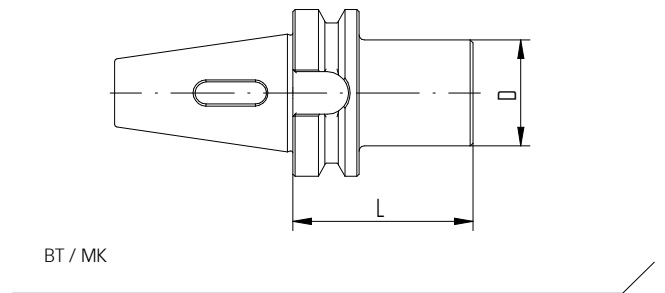
MAS 403

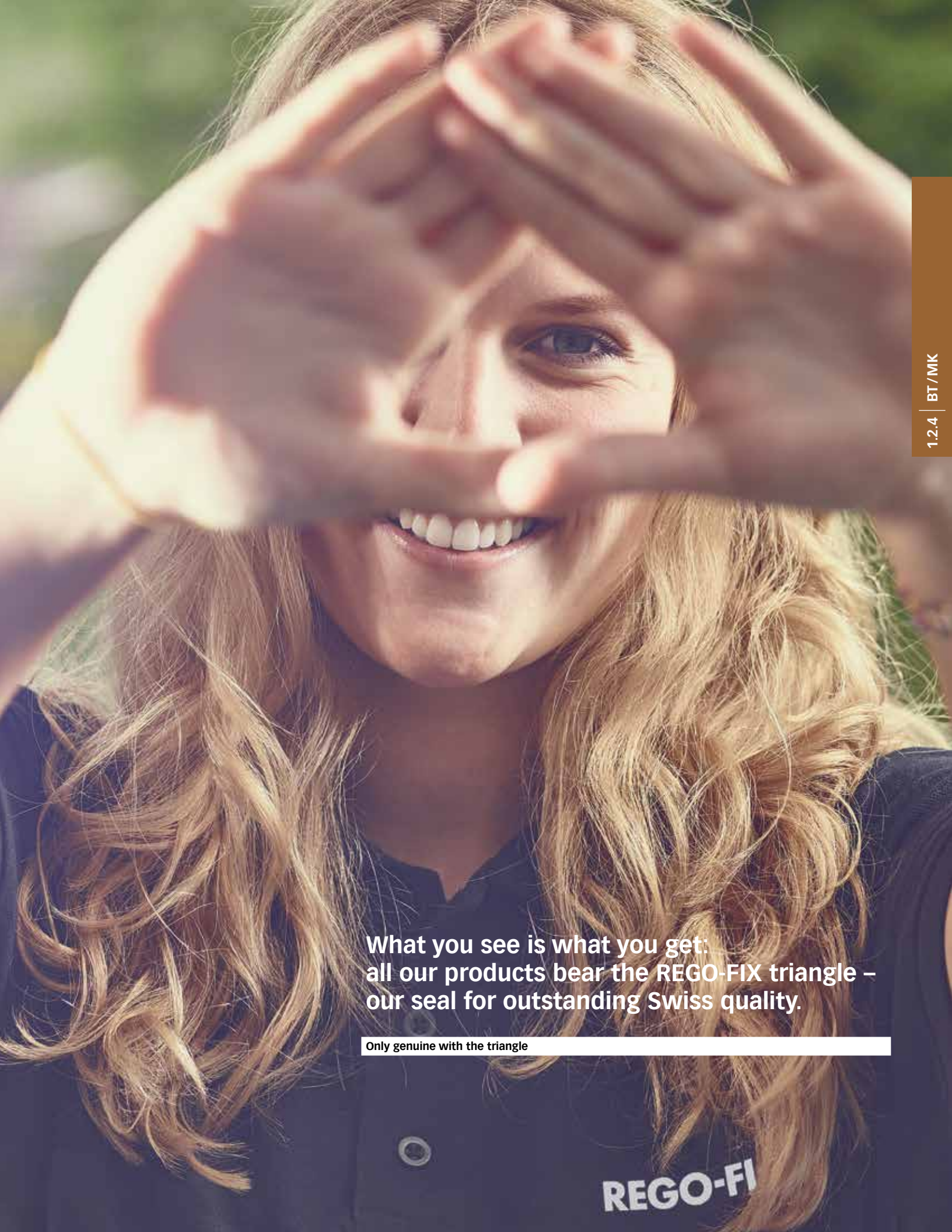
JIS B 6339

DIN ISO 7388-2

1.2.4 | BT / MK

Type	Part no.	Dimensions [mm]	
		D	L
BT 40			
BT 40 / MK 1 x 050	2140.80110	25	50
BT 40 / MK 2 x 050	2140.80210	32	50
BT 40 / MK 3 x 070	2140.80320	40	70
BT 40 / MK 4 x 095	2140.80430	48	95



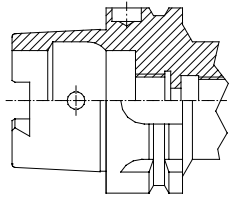


**What you see is what you get:
all our products bear the REGO-FIX triangle –
our seal for outstanding Swiss quality.**

Only genuine with the triangle

REGO-FI

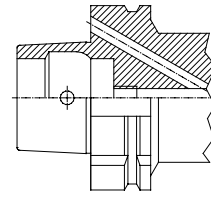
HSK forms and their key characteristics



Form A*

- // Standard type for machining centers and milling machines
- // For automatic tool change
- // Coolant supply through center via coolant tube
- // Drive keys at the end of HSK taper
- // Hole for data carrier DIN STD 69873 in the flange is available on request

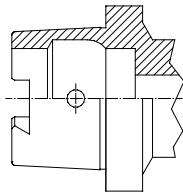
* Also usable in form C applications with side hole for manual tool change



Form B

- // For machining centers, milling and turning machines
- // With enlarged flange size for higher radial rigidity
- // For automatic tool change
- // Coolant supply through the flange
- // Drive keys at the flange

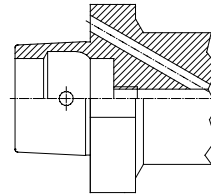
Available on request.



Form C

- // For transfer lines, special machines and modular tooling systems
- // For manual tool change
- // Drive keys at the end of HSK taper

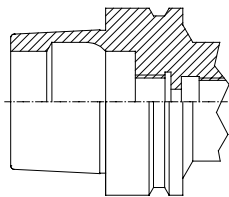
Available on request.



Form D

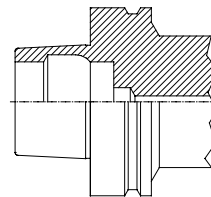
- // For special machines
- // With enlarged flange size for higher radial rigidity
- // For manual tool change
- // Coolant supply through the flange
- // Drive keys at the flange

Available on request.



Form E

- // For high-speed applications
- // For automatic tool change
- // Coolant supply through center via coolant tube
- // Without any drive keys for absolute symmetry



Form F

- // For high-speed applications
- // For automatic tool change
- // With enlarged flange size for higher radial rigidity
- // Without any drive keys for absolute symmetry

Available on request.

Weldon end mill holders HSK/WD

Designed for rotating applications, all our HSK holders are suited for high-speed applications where a consistent performance is key.

DIN 69893 / ISO 12164

Features of end mill holders (Weldon)

Runout TIR $\leq 0.0001''$ (3 μm)

Measured from inner bore to outer taper.

Side locking screw

For highest transferable torque.

ID chip hole (only HSK form A)

In accordance with DIN 69873 for 10 mm diameter.
Available on request.

Expert advice

For all HSK-A and HSK-E form holders a range of coolant tubes (KSR) is available.

For KSR part numbers please refer to page 44.



Type	Part no.	Dimensions [mm]			Drawing
		d	D	L	
HSK-A 32					
HSK-A 32 / WD 6 x 055*	2532.30620	6	25	55	1
HSK-A 32 / WD 8 x 055*	2532.30820	8	28	55	1
HSK-A 32 / WD 10 x 063*	2532.31030	10	35	63	1
HSK-A 32 / WD 12 x 065*	2532.31230	12	42	65	1
HSK-A 40					
HSK-A 40 / WD 6 x 060	2540.30630	6	25	60	1
HSK-A 40 / WD 8 x 060	2540.30830	8	28	60	1
HSK-A 40 / WD 10 x 060	2540.31030	10	35	60	1
HSK-A 40 / WD 12 x 070	2540.31240	12	42	70	1
HSK-A 40 / WD 14 x 075	2540.31440	14	44	75	1
HSK-A 40 / WD 16 x 075	2540.31640	16	48	75	1
HSK-A 50					
HSK-A 50 / WD 6 x 065	2550.30630	6	25	65	1
HSK-A 50 / WD 8 x 065	2550.30830	8	28	65	1
HSK-A 50 / WD 10 x 065	2550.31030	10	35	65	1
HSK-A 50 / WD 12 x 080	2550.31250	12	42	80	1
HSK-A 50 / WD 14 x 080	2550.31450	14	44	80	1
HSK-A 50 / WD 16 x 080	2550.31650	16	48	80	1
HSK-A 50 / WD 18 x 080	2550.31850	18	50	80	1
HSK-A 50 / WD 20 x 080	2550.32050	20	52	80	1
HSK-A 63					
HSK-A 63 / WD 6 x 065	2563.30630	6	25	65	1
HSK-A 63 / WD 8 x 065	2563.30830	8	28	65	1
HSK-A 63 / WD 10 x 065	2563.31030	10	35	65	1
HSK-A 63 / WD 12 x 080	2563.31250	12	42	80	1
HSK-A 63 / WD 14 x 080	2563.31450	14	44	80	1
HSK-A 63 / WD 16 x 080	2563.31650	16	48	80	1
HSK-A 63 / WD 18 x 080	2563.31850	18	50	80	1
HSK-A 63 / WD 20 x 080	2563.32050	20	52	80	1
HSK-A 63 / WD 25 x 110	2563.32560	25	65	110	2
HSK-A 63 / WD 32 x 110	2563.33260	32	72	110	2

* HSK taper without side hole.

Weldon end mill holders HSK-A/WD and HSK-E/WD

HSK/WD

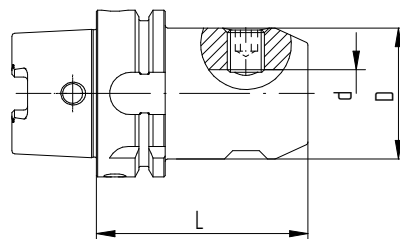
DIN 69893

ISO 12164

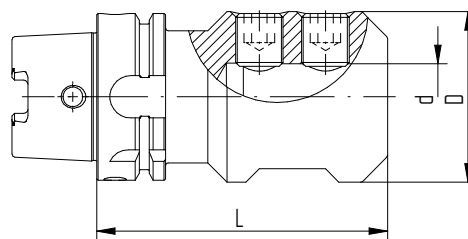
Type	Part no.	Dimensions [mm]			Drawing
		d	D	L	
HSK-A 100					
HSK-A 100 / WD 6 x 080	2500.30650	6	25	80	1
HSK-A 100 / WD 8 x 080	2500.30850	8	28	80	1
HSK-A 100 / WD 10 x 080	2500.31050	10	35	80	1
HSK-A 100 / WD 12 x 080	2500.31250	12	42	80	1
HSK-A 100 / WD 14 x 080	2500.31450	14	44	80	1
HSK-A 100 / WD 16 x 100	2500.31660	16	48	100	1
HSK-A 100 / WD 18 x 100	2500.31860	18	50	100	1
HSK-A 100 / WD 20 x 100	2500.32060	20	52	100	1
HSK-A 100 / WD 25 x 100	2500.32560	25	65	100	2
HSK-A 100 / WD 32 x 100	2500.33260	32	72	100	2
HSK-A 100 / WD 40 x 110	2500.34060	40	80	110	2
HSK-E 40					
HSK-E 40 / WD 6 x 060	2540.30634	6	25	60	1
HSK-E 40 / WD 8 x 060	2540.30834	8	28	60	1
HSK-E 40 / WD 10 x 060	2540.31034	10	35	60	1
HSK-E 40 / WD 12 x 070	2540.31244	12	42	70	1
HSK-E 40 / WD 16 x 070	2540.31644	16	48	70	1

Included in delivery: End mill holder and lock screw.

HSK-A: Hole for data carrier DIN STD 69873 in the flange available on request.



Drawing 1 HSK-A / WD



Drawing 2 HSK-A / WD

Universal shell/face mill holders HSK-A/KFD and HSK-E/KFD

HSK/KFD

DIN 69893

ISO 12164

Type	Part no.	Dimensions [mm]			Drawing	Accessories
		D	D1	L		Wrench
HSK-A 32						
HSK-A 32 / KFD 16 x 045	2532.41620	16	32	45	1	FDS 16
HSK-A 32 / KFD 22 x 050	2532.42230	22	40	50	1	FDS 22
HSK-A 40						
HSK-A 40 / KFD 16 x 030	2540.41600	16	32	30	1	FDS 16
HSK-A 40 / KFD 22 x 050	2540.42230	22	40	50	1	FDS 22
HSK-A 50						
HSK-A 50 / KFD 16 x 050	2550.41630	16	32	50	1	FDS 16
HSK-A 50 / KFD 22 x 050	2550.42230	22	40	50	1	FDS 22
HSK-A 50 / KFD 27 x 065	2550.42740	27	48	65	2	FDS 27
HSK-A 50 / KFD 32 x 065	2550.43240	32	58	65	2	FDS 32
HSK-A 63						
HSK-A 63 / KFD 16 x 060	2563.41640	16	32	60	1	FDS 16
HSK-A 63 / KFD 22 x 060	2563.42240	22	40	60	1	FDS 22
HSK-A 63 / KFD 27 x 060	2563.42740	27	48	60	1	FDS 27
HSK-A 63 / KFD 32 x 060	2563.43240	32	58	60	1	FDS 32
HSK-A 63 / KFD 40 x 070	2563.44050	40	70	70	2	FDS 40
HSK-A 100						
HSK-A 100 / KFD 16 x 060	2500.41640	16	32	60	1	FDS 16
HSK-A 100 / KFD 22 x 060	2500.42240	22	40	60	1	FDS 22
HSK-A 100 / KFD 27 x 060	2500.42740	27	48	60	1	FDS 27
HSK-A 100 / KFD 32 x 060	2500.43240	32	58	60	1	FDS 32
HSK-A 100 / KFD 40 x 070	2500.44050	40	70	70	1	FDS 40
HSK-A 100 / KFD 50 x 080	2500.45060	50	90	80	2	FDS 50
HSK-E 40						
HSK-E 40 / KFD 16 x 045	2540.41624	16	32	45	–	FDS 16

Included in delivery: Universal shell/face mill holder, lock screw, feather key and drive ring.

For details on our FDS wrenches, please refer to page 42.

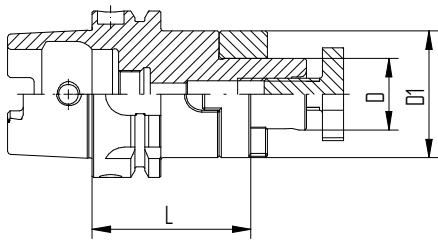
HSK-A: Hole for data carrier DIN STD 69873 in the flange available on request.

Universal shell/face mill holders HSK-A/KFD and HSK-E/KFD

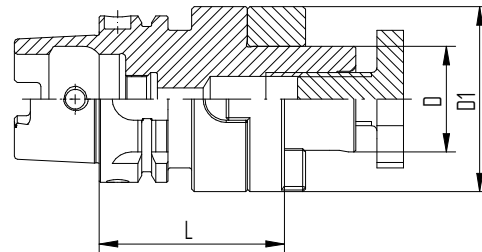
HSK/KFD

DIN 69893

ISO 12164



Drawing 1 HSK-A / KFD



Drawing 2 HSK-A / KFD

Type	Part no.	d	Dimensions [mm]	
			D	L
HSK-A 63 / KBF				
HSK-A 63 / KBF 1 – 13 mm	2563.50100	1–13	50	104

Included in delivery: Drill chuck and Allen key™.

HSK-A: Hole for data carrier DIN STD 69873 in the flange available on request.

Drill chucks HSK-A/KBF

Features and benefits

Clamping range

1–13 mm

Maximum runout

0.03 mm

Maximum tightening torque

20 Nm

Clamping force (at 20 Nm tightening torque)

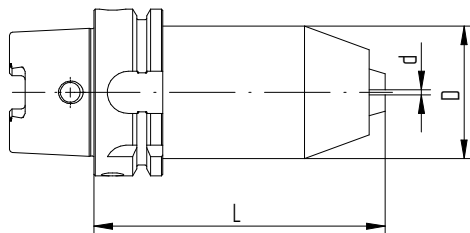
80 Nm

Maximum rpm

35,000 min⁻¹



HSK-A / KBF



HSK-A / KBF

Morse taper holders HSK-A / MK

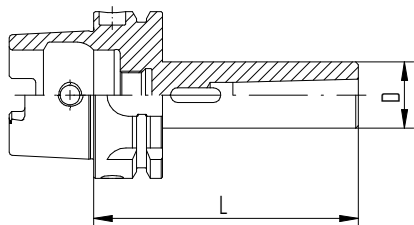
HSK-A/MK

DIN 69893

ISO 12164

Type	Part no.	Dimensions [mm]	
		D	L
HSK-A 63 / MK			
HSK-A 63 / MK 1 x 100	2563.80140	25	100
HSK-A 63 / MK 2 x 120	2563.80250	32	120
HSK-A 63 / MK 3 x 140	2563.80360	40	140
HSK-A 63 / MK 4 x 160	2563.80470	48	160

HSK-A: Hole for data carrier DIN STD 69873 in the flange available on request.



REGO-FIX CAPTO licensed by Sandvik Coromant

End mill holders REGO-FIX C/WD

These self-centering and balanced holders enable a high torque transmission and show a high bending strength.

ISO 12164

Features of end mill holders (Weldon)

Runout TIR $\leq 0.0001''$ (3 μm)

Measured from inner bore to outer taper.

Side locking screw

For highest transferable torque.

Certified REGO-FIX CAPTO – licensed by Sandvik Coromant – is manufactured at REGO-FIX Switzerland under license according to CAPTO specifications.

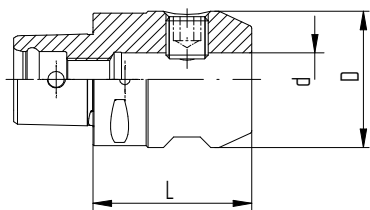


REGO-FIX CAPTO holders licensed by Sandvik Coromant

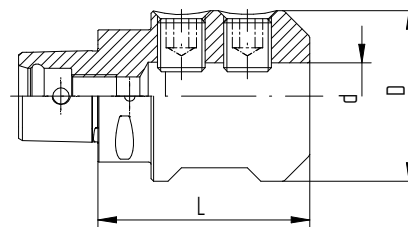
End mill holders REGO-FIX C/WD

C/WD
ISO 26623

Type	Part no.	Dimensions [mm]			Drawing
		D1	d	L	
C3					
C3 / WD 6 x 045	2803.30610	25	6	45	1
C3 / WD 8 x 045	2803.30810	28	8	45	1
C3 / WD 10 x 050	2803.31020	35	10	50	1
C3 / WD 12 x 055	2803.31220	42	12	55	1
C4					
C4 / WD 6 x 050	2804.30620	25	6	50	1
C4 / WD 8 x 050	2804.30820	28	8	50	1
C4 / WD 10 x 050	2804.31020	35	10	50	1
C4 / WD 12 x 055	2804.31220	42	12	55	1
C4 / WD 14 x 055	2804.31420	44	14	55	1
C4 / WD 16 x 055	2804.31620	48	16	55	1
C5					
C5 / WD 6 x 050	2805.30620	25	6	50	1
C5 / WD 8 x 050	2805.30820	28	8	50	1
C5 / WD 10 x 055	2805.31020	35	10	55	1
C5 / WD 12 x 060	2805.31230	42	12	60	1
C5 / WD 14 x 060	2805.31430	44	14	60	1
C5 / WD 16 x 060	2805.31630	48	16	60	1
C5 / WD 18 x 060	2805.31830	50	18	60	1
C5 / WD 20 x 060	2805.32030	52	20	60	1
C5 / WD 25 x 080	2805.32550	65	25	80	2



Drawing 1 C / WD



Drawing 2 C / WD

REGO-FIX CAPTO holders licensed by Sandvik Coromant

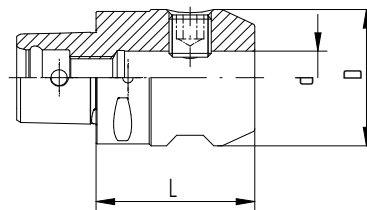
End mill holders REGO-FIX C/WD

C/WD

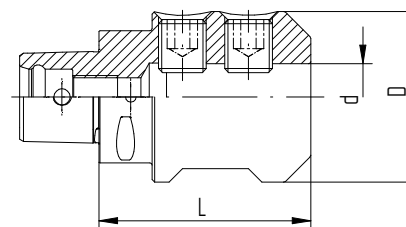
ISO 26623

Type	Part no.	Dimensions [mm]			Drawing
		D1	d	L	
C6					
C6 / WD 6 x 055	2806.30620	25	6	55	1
C6 / WD 8 x 055	2806.30820	28	8	55	1
C6 / WD 10 x 060	2806.31030	35	10	60	1
C6 / WD 12 x 060	2806.31230	42	12	60	1
C6 / WD 14 x 060	2806.31430	44	14	60	1
C6 / WD 16 x 065	2806.31630	48	16	65	1
C6 / WD 18 x 065	2806.31830	50	18	65	1
C6 / WD 20 x 065	2806.32030	52	20	65	1
C6 / WD 25 x 080	2806.32550	65	25	80	2
C6 / WD 32 x 090	2806.33250	72	32	90	2
C6 / WD 40 x 100	2806.34060	80	40	100	2

C8					
C8 / WD 6 x 070	2808.30640	25	6	70	1
C8 / WD 8 x 070	2808.30840	28	8	70	1
C8 / WD 10 x 070	2808.31040	35	10	70	1
C8 / WD 12 x 070	2808.31240	42	12	70	1
C8 / WD 14 x 070	2808.31440	44	14	70	1
C8 / WD 16 x 070	2808.31640	48	16	70	1
C8 / WD 18 x 070	2808.31840	50	18	70	1
C8 / WD 20 x 070	2808.32040	52	20	70	1
C8 / WD 25 x 080	2808.32550	65	25	80	2
C8 / WD 32 x 080	2808.33250	72	32	80	2
C8 / WD 40 x 110	2808.34060	80	40	110	2



Drawing 1 C / WD



Drawing 2 C / WD

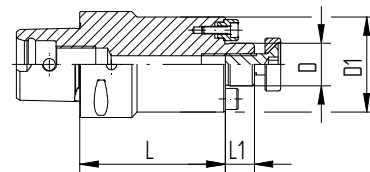
REGO-FIX CAPTO holders licensed by Sandvik Coromant

Shell mill arbors REGO-FIX C/MA

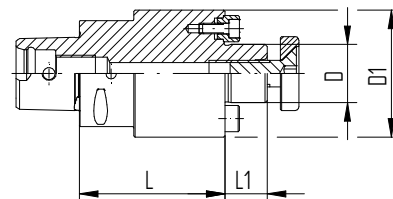
C/MA

ISO 26623

Type	Part no.	Dimensions [mm]				Drawing
		D	D1	L	L1	
C3						
C3 / MA 16 x 030	2803.01610	16	36	30	11	2
C4						
C4 / MA 16 x 032	2804.01610	16	36	32	11	1
C4 / MA 16 x 055	2804.01620	16	36	55	11	1
C4 / MA 22 x 025	2804.02210	22	48	25	16	2
C4 / MA 22 x 055	2804.02220	22	48	55	16	2
C5						
C5 / MA 16 x 035	2805.01610	16	36	35	11	1
C5 / MA 16 x 070	2805.01640	16	36	70	11	1
C5 / MA 22 x 025	2805.02210	22	50	25	16	1
C5 / MA 22 x 070	2805.02240	22	48	70	16	1
C5 / MA 27 x 025	2805.02710	27	56	25	18	2
C5 / MA 32 x 040	2805.03210	32	65	40	20	2



Drawing 1 C / MA



Drawing 2 C / MA

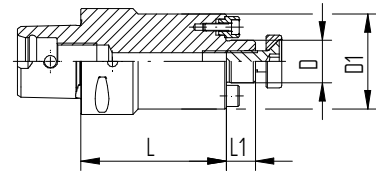
REGO-FIX CAPTO holders licensed by Sandvik Coromant

Shell mill arbors REGO-FIX C / MA

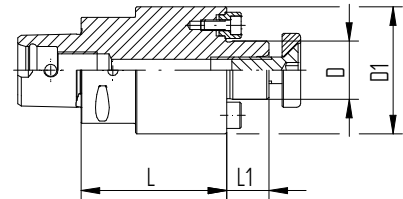
C / MA
ISO 26623

1.4.2 C / MA

Type	Part no.	Dimensions [mm]				Drawing
		D	D1	L	L1	
C6						
C6 / MA 16 x 040	2806.01610	16	36	40	11	1
C6 / MA 22 x 025	2806.02210	22	55	25	16	1
C6 / MA 27 x 025	2806.02710	27	63	25	18	1
C6 / MA 32 x 025	2806.03210	32	65	25	20	2
C6 / MA 40 x 040	2806.04010	40	80	40	23	2
C8						
C8 / MA 16 x 050	2808.01620	16	36	50	11	1
C8 / MA 22 x 030	2808.02210	22	55	30	16	1
C8 / MA 27 x 030	2808.02710	27	65	30	18	1
C8 / MA 32 x 030	2808.03210	32	80	30	20	1
C8 / MA 40 x 030	2808.04010	40	80	30	23	1



Drawing 1 C / MA



Drawing 2 C / MA

**We believe in sustainable business.
To us, this also means investing
in young talents and support them
to become machining experts.**

Investing into the future



Milling Chucks

REGO-FIX Milling Chucks are designed to provide the best run-out and highest gripping force available from a milling chuck. Designed for long life and smooth clamping, the chuck can be reduced down with sleeves to fit your machining application.

ISO 9001 / ISO 14001

Features of Milling Chucks

Runout TIR $\leq 0.0004"$

Measured from inner bore to outer taper.

Tool shanks

All round h6 and h7 shank tools can be held without issue

Roller cage

Special cage design and hardened roller bearing provide maximum flexibility for even torque and overall tool durability.

For coolant through tools

Multi-seal design ensures best coolant sealing capability with large I.D. and O.D. o-ring seals for superior sealing.

Nut design

Large oversized nut design for superior rigidity, durability and performance.

Quality REGO-FIX Mill Chucks are fully marked with product type, part number and lot number to ensure full traceability throughout the entire manufacturing process.



Milling Chucks (MC) Milling Chuck Sleeves (MCS)

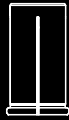
millTite

Type	Part no.	Dimensions [mm]		Wrench
		D	L	
CAT / MC				
CAT 40 / MC 0750 x 095	8020.83344	54	95	8020.99750
CAT 40 / MC 1000 x 095	8020.81344	65	95	8020.99100
CAT 40 / MC 1250 x 110	8020.84345	75	110	8020.99125
CAT 50 / MC 0750 x 105	8020.83355	54	105	8020.99750
CAT 50 / MC 1000 x 105	8020.81355	65	105	8020.99100
CAT 50 / MC 1250 x 110	8020.84355	75	110	8020.99125
BT / MC				
BT 40 / MC 0750 x 085	8020.83144	54	85	8020.99750
BT 40 / MC 1250 x 110	8020.84145	75	110	8020.99125
HSK / MC				
HSK-A 63 / MC 0750 x 100	8020.83565	54	100	8020.99750
HSK-A 63 / MC 1250 x 120	8020.84566	75	120	8020.99125

Ø bore		Part no.			Ø bore		Part no.		
[inch]	MCS 0750	MCS 1000	MCS 1250	[mm]	MCS 0750	MCS 1000	MCS 1250		
1/4"	8020.93251	8020.91251	8020.94251	6	8020.93060	8020.91060	8020.94060		
5/16"	8020.93311	8020.91311	8020.94311	8	8020.93080	8020.91080	8020.94080		
3/8"	8020.93371	8020.91371	8020.94371	10	8020.93100	8020.91100	8020.94100		
1/2"	8020.93501	8020.91501	8020.94501	12	8020.93120	8020.91120	8020.94120		
5/8"	8020.93621	8020.91621	8020.94621	16	8020.93160	8020.91160	8020.94160		
3/4"	–	8020.91751	8020.94751	20	–	8020.91200	8020.94200		
7/8"	–	8020.91871	8020.94871	25	–	–	8020.94250		
1"	–	–	8020.94001						

**Reduction sleeves
for hydro chucks**

HS



page 37

HS-CF
with coolant flush



page 37



Reduction sleeves for hydro chucks

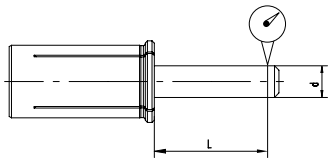
Reduction sleeves are designed to fit hydro chucks of different manufacturers. They are specially suited for high-precision clamping of cylindrical tool shanks.

Reduction sleeves for hydro chucks Our reduction sleeves are designed to fit hydro chucks of different manufacturers. They are specially suited for high-precision clamping of cylindrical tool shanks per DIN 6335 form HA, HB and HE, as well as tool shanks per DIN 1835 form B, C, D and E.

The special design of REGO-FIX reduction sleeves allows an efficient use of coolant through cutting tools. This self-sealing system works with the most common hydraulic expansion chucks.

- Correct assembly** Improper assembly can damage the concentricity of the reduction sleeve.
- // Insert tools the full length of the reduction sleeve
 - // Only clamp h6 tool shanks
 - // Do not clamp reduction sleeve without a tool, as this could result in a damaged reduction sleeve

Concentricity (TIR) of REGO-FIX HS type reduction sleeves



Clamping diameter d [mm]			max. TIR [mm]
> d	≤d	L	
3.0	6.0	16	0.003
6.0	10.0	25	0.003
10.0	18.0	40	0.003
18.0	26.0	50	0.003



Swiss quality standard
Our products marked Swiss made are manufactured at our headquarters in Tenniken, Switzerland.

Reductions sleeves for hydro chucks HS

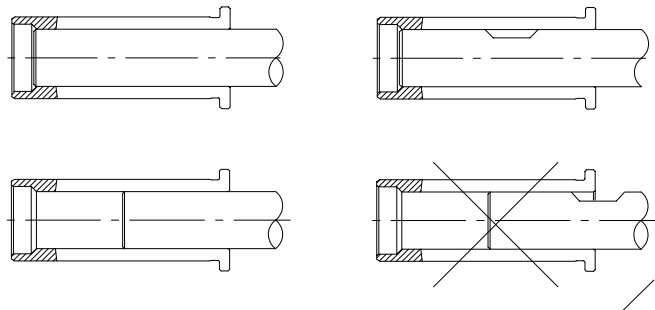
Features and benefits

Accurate precision
Runout TIR <3 μm

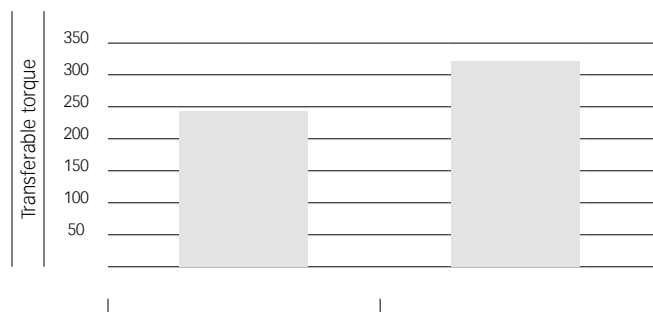
High flexibility
Clamp different tool shank diameters in hydro chucks: 12, 20, 25 and 32 mm.

Standard version HS suited for internal cooling
Metal-to-metal seal for cutting tools with internal coolant channels.

HS-CF suited for peripheral cooling
The coolant flush reductions sleeves HS-CF can be used for peripheral cooling due to their coolant channels.



Comparison of transferable torque at Ø 20 mm



Direct clamping
Shank Ø 20 mm in toolholder Ø 20 mm

Reduction sleeve 32/20
Shank Ø 20 mm in toolholder Ø 32 mm

Ø bore [mm]	Part no.							
	HS 12-MB	HS 12	HS 12-CF	HS 20	HS 20-CF	HS 25	HS 32	HS 32-CF
1.0	1912.01009	-	-	-	-	-	-	-
1.5	1912.01509	-	-	-	-	-	-	-
2.0	1912.02009	-	-	-	-	-	-	-
2.5	1912.02509	-	-	-	-	-	-	-
3.0	-	1912.03000	1912.03002	1920.03000	1920.03002	1925.03000	1932.03000	-
4.0	-	1912.04000	1912.04002	1920.04000	1920.04002	1925.04000	1932.04000	-
5.0	-	1912.05000	1912.05002	1920.05000	1920.05002	1925.05000	1932.05000	-
6.0	-	1912.06000	1912.06002	1920.06000	1920.06002	1925.06000	1932.06000	1932.06002
7.0	-	1912.07000	-	1920.07000	-	1925.07000	1932.07000	-
8.0	-	1912.08000	1912.08002	1920.08000	1920.08002	1925.08000	1932.08000	1932.08002
9.0	-	1912.09000	-	1920.09000	-	1925.09000	1932.09000	-
10.0	-	1912.10000	-	1920.10000	1920.10002	1925.10000	1932.10000	1932.10002
11.0	-	-	-	1920.11000	-	-	1932.11000	-
12.0	-	-	-	1920.12000	1920.12002	1925.12000	1932.12000	1932.12002
13.0	-	-	-	1920.13000	-	-	1932.13000	-
14.0	-	-	-	1920.14000	1920.14002	1925.14000	1932.14000	1932.14002
15.0	-	-	-	1920.15000	-	-	1932.15000	-
16.0	-	-	-	1920.16000	1920.16002	1925.16000	1932.16000	1932.16002
17.0	-	-	-	-	-	-	1932.17000	-
18.0	-	-	-	1920.18000	-	1925.18000	1932.18000	1932.18002
19.0	-	-	-	-	-	-	1932.19000	-
20.0	-	-	-	-	-	1925.20000	1932.20000	1932.20002
21.0	-	-	-	-	-	-	-	-
22.0	-	-	-	-	-	-	1932.22000	-
23.0	-	-	-	-	-	-	-	-
24.0	-	-	-	-	-	-	-	-
25.0	-	-	-	-	-	-	1932.25000	1932.25002

For further technical information, please refer to page 52 and 53.

Expert advice

The coolant flush reductions sleeves HS-CF can be used for peripheral cooling due to their coolant channels.

Easy removing of the reduction sleeve from the hydro chucks thanks to the extractor EHS.

For part numbers and more information, please refer to page 43.

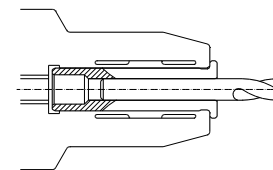


Ø bore		Part no.			
[decimal "]	[inch]	HS 12	HS 20	HS 25	HS 32
0.125	1/8"	1912.03181	1920.03181	1925.03181	–
0.1875	3/16"	1912.04761	1920.04761	1925.04761	1932.04761
0.25	1/4"	1912.06351	1920.06351	1925.06351	1932.06351
0.3125	5/16"	1912.07941	1920.07941	1925.07941	1932.07941
0.375	3/8"	1912.09521	1920.09521	1925.09521	1932.09521
0.4375	7/16"	–	1920.11111	1925.11111	1932.11111
0.5	1/2"	–	1920.12701	1925.12701	1932.12701
0.5625	9/16"	–	1920.14291	1925.14291	1932.14291
0.625	5/8"	–	1920.15881	1925.15881	1932.15881
0.6875	11/16"	–	–	1925.17461	1932.17461
0.75	3/4"	–	–	1925.19051	1932.19051
0.8125	13/16"	–	–	1925.20631	1932.20631
0.875	7/8"	–	–	–	1932.22221
0.9375	15/16"	–	–	–	1932.23811
1.0	1"	–	–	–	1932.25401

For further technical information, please refer to page 52 and 53.

Expert advice

The outer diameter of the reduction sleeves corresponds to each type, e.g. HS 12 equals diameter 12 mm.



HS section drawing

Ø bore		Part no.			
[decimal "]	[inch]	HS 1/2"	HS 3/4"	HS 1"	HS 1 1/4"
0.125	1/8"	1913.03182	1919.03182	1926.03182	–
0.1875	3/16"	1913.04762	1919.04762	1926.04762	1931.04762
0.25	1/4"	1913.06352	1919.06352	1926.06352	1931.06352
0.3125	5/16"	1913.07942	1919.07942	1926.07942	1931.07942
0.375	3/8"	1913.09522	1919.09522	1926.09522	1931.09522
0.4375	7/16"	–	1919.11112	1926.11112	1931.11112
0.5	1/2"	–	1919.12702	1926.12702	1931.12702
0.5625	9/16"	–	1919.14292	1926.14292	1931.14292
0.625	5/8"	–	1919.15882	1926.15882	1931.15882
0.6875	11/16"	–	–	1926.17462	1931.17462
0.75	3/4"	–	–	1926.19052	1931.19052
0.8125	13/16"	–	–	–	–
0.875	7/8"	–	–	–	–
0.9375	15/16"	–	–	–	–
1.0	1"	–	–	–	1931.25402

For further technical information, please refer to page 52 and 53.

Expert advice

Our chip cover is ideally suited for the removal of chips. The cover can simply be clicked-in at the head of our reduction sleeves.

For part numbers and more information, please refer to page 43.

Contents

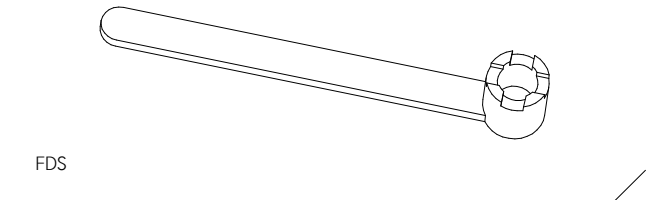
Multi Line accessories

Enhance your tool life with the proper accessories for safe toolholding.

Wrenches for universal shell/face mill holders FDS	42
Extractors for reduction sleeves EHS	43
Chip covers for reduction sleeves CC	43
Coolant tubes KSR	44
Wrenches for coolant tubes SKR	44
Toolholding fixtures	45
Cleaning accessories	46
Drawbar ForceCheck	48



Type	Part no.
Wrenches FDS	
FDS 16	7711.16000
FDS 22	7711.22000
FDS 27	7711.27000
FDS 32	7711.32000
FDS 40	7711.40000
FDS 50	7711.50000



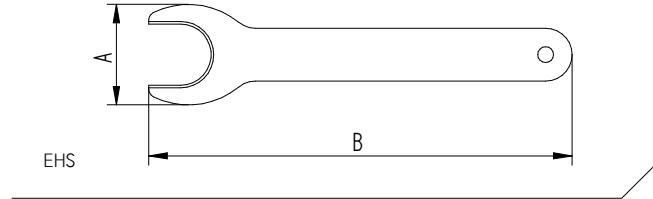
Extractors for reduction sleeves EHS

Chip covers for reduction sleeves CC

EHS

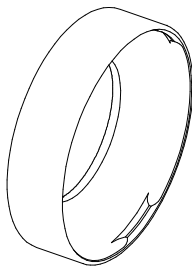
CC-HS

Type	Part no.	A [mm]	B [mm]
Extractors for reduction sleeves EHS			
EHS 12 – 1/2"	7321.12000	24	100
EHS 20 – 3/4"	7321.20000	38	160
EHS 25 – 1"	7321.25000	51	180
EHS 32 – 1 1/4"	7321.32000	63	200



Type	Part no.	Fits	Reduction sleeve Ø	
			[mm]	[inch]
Chip covers for reduction sleeves CC-HS 12				
CC-HS 12 – 1/2" / Ø 4.0 mm	7331.04200	HS 12, HS 1/2"	3–4	1/8"
CC-HS 12 – 1/2" / Ø 6.0 mm	7331.06600	HS 12, HS 1/2"	5–6	3/16"–1/4"
CC-HS 12 – 1/2" / Ø 10.0 mm	7331.10200	HS 12, HS 1/2"	7–10	5/16"–3/8"

Chip covers for reduction sleeves CC-HS 20				
CC-HS 20 – 3/4" / Ø 4.0 mm	7333.04200	HS 20, HS 3/4"	3–4	1/8"
CC-HS 20 – 3/4" / Ø 6.0 mm	7333.06600	HS 20, HS 3/4"	5–6	1/16"–1/4"
CC-HS 20 – 3/4" / Ø 10.0 mm	7333.10200	HS 20, HS 3/4"	7–10	5/16"–3/8"
CC-HS 20 – 3/4" / Ø 14.0 mm	7333.14200	HS 20, HS 3/4"	11–14	7/16"–1/2"
CC-HS 20 – 3/4" / Ø 16.0 mm	7333.16200	HS 20, HS 3/4"	15–16	9/16"–5/8"
CC-HS 20 – 3/4" / Ø 18.0 mm	7333.18200	HS 20, HS 3/4"	18	–



CC-HS

Coolant tubes KSR

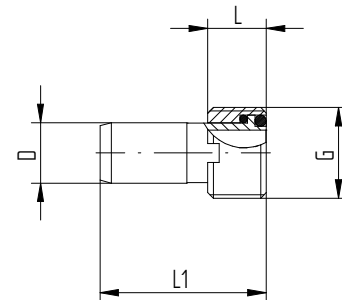
Wrenches for coolant tubes SKR

KSR

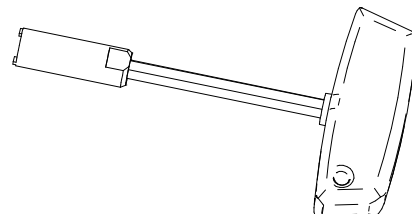
SKR

Type	Part no.	Dimensions [mm]			
		D	L	L1	G
Coolant tubes KSR					
KSR 25	7211.25000	5	4.5	17	M 8 x 1
KSR 32	7211.32000	6	5.5	25.7	M 10 x 1
KSR 40	7211.40000	8	7.5	29.2	M 12 x 1
KSR 50	7211.50000	10	9.5	32.7	M 16 x 1
KSR 63	7211.63000	12	11.5	36.2	M 18 x 1
KSR 80	7211.80000	14	13.5	39.7	M 20 x 1.5
KSR 100	7211.00000	16	15.5	43.6	M 24 x 1.5
KSR 125	7211.12500	16	15.5	43.6	M 24 x 1.5

Type	Part no.
Wrenches SKR	
SKR 25	7212.25000
SKR 32	7212.32000
SKR 40	7212.40000
SKR 50	7212.50000
SKR 63	7212.63000
SKR 80	7212.80000
SKR 100	7212.00000
SKR 125	7212.12500



KSR



SKR

Toolholding fixtures

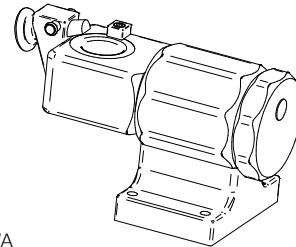
WMH

WA / SK

WA / HSK

WA / C

Type	Part no.	Fits this interface
Tool assembly WMH		
WMH-AC 45°	7813.00000	–
WMH-AC 90°	7813.00100	–

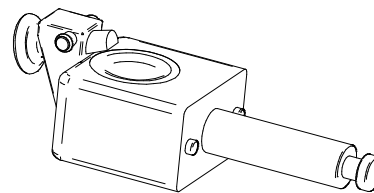


WMH / WA

Tool adapter WA / SK		
WA / SK 30	7814.30100	BT / CAT / SK 30
WA / SK 40	7814.40100	BT / CAT / SK 40
WA / SK 50	7814.50100	BT / CAT / SK 50

Tool adapter WA / HSK-A / C / E		
WA / HSK-A / C / E 25	7814.25300	HSK-A / C / E 25

Tool adapter WA / HSK-A		
WA / HSK-A 32	7814.32200	HSK-A 32
WA / HSK-A 40	7814.40200	HSK-A 40
WA / HSK-A 50	7814.50200	HSK-A 50
WA / HSK-A 63	7814.63200	HSK-A 63
WA / HSK-A 80	7814.80200	HSK-A 80
WA / HSK-A 100	7814.00200	HSK-A 100



WA

Tool adapter WA / HSK-C / E		
WA / HSK-C / E 32	7814.32500	HSK-C / E 32
WA / HSK-C / E 40	7814.40500	HSK-C / E 40
WA / HSK-C / E 50	7814.50500	HSK-C / E 50
WA / HSK-C / E 63	7814.63500	HSK-C / E 63

Tool adapter WA / HSK-B / D / F		
WA / HSK-B / D / F 63	7814.63400	HSK-B / D / F 63

Tool adapter WA / C		
WA / C3	7814.03700	CAPTO C3
WA / C4	7814.04700	CAPTO C4
WA / C5	7814.05700	CAPTO C5
WA / C6	7814.06700	CAPTO C6
WA / C8	7814.08700	CAPTO C8

Cleaning accessories

Type	Part no.
Ultrasonic Tooling System Cleaner	
Ultrasonic Cleaning Unit	US-PRO1208
Ultrasonic Cleaning Solution	US-815CLEAN

Heavy duty stainless steel double-wall design provides highly efficient cleaning. The multi-frequency operating ensures optimum cleaning conditions for most tooling system components.

- // User friendly digital timer
- // Frequency load control
- // 40kHz / 250 Watt
- // 4 gallon capacity
- // Overall dimensions 16"W x 18"L x 16"H / Internal 12"W x 8"L x 10"D
- // Heavy duty 14 gauge stainless steel construction
- // Double welded walls and joints
- // Stainless steel cleaning basket
- // 2 year warranty - generator, workmanship and materials
- // 10 year warranty - transducer bond



Type	Part no.
Hydroball	
Hydroball Cleaning Unit	8020.02300

The Hydroball unit uses the machine's own coolant pressure to clean chips accumulated on the table work area and machine walls. The Hydroball works best on machines with a traversing spindle.

- // Requires any 5/8" endmill or collet holder
- // Program machine to cycle side-to-side from top-to-bottom between 36-120 in/min
- // Set machine to run at 20-50 rpm
- // Use coolant pressures between 210-1800 psi
- // Control the spray pattern by opening or closing the different nozzles on the ball



Cleaning accessories

Type	Part no.
Taper Cleaner	
Taper Cleaner Base Unit	A8000.10000
30 Taper Brush Head	A8000.10300
40 Taper Brush Head	A8000.10400
50 Taper Brush Head	A8000.10500
HSK 63 Brush Head	A8000.16300

Other tapers available upon request

The REGO-FIX Taper Cleaning device is designed to clean toolholder interfaces by way interchangeable brush head canopies situated on a base motor. The Taper Cleaner is made for easy, effortless cleaning and removal of oil and emulsion coolants, rust and other partially resinous dirt residues.

- // Increased runout accuracy of cutting tool
- // Increased service life of cutting edge
- // Assists in the protection of the machine spindle
- // Maintains lasting precision of tooling interface
- // Reduces waste



Type	Complete Wiper	Replacement Blades
Spindle Wipers		
ISO 25 Spindle Cleaner	S8000.30250	S8000.30251
ISO 30 Spindle Cleaner	S8000.30300	S8000.30301
ISO 40 Spindle Cleaner	S8000.30400	S8000.30401
ISO 45 Taper Cleaner	S8000.30450	S8000.30451
ISO 50 Taper Cleaner	S8000.30500	S8000.30501

The REGO-FIX Spindle Wiper removes oils and contaminants for increased taper contact, resulting in better overall tooling system performance and life.

- // Available in most standard spindle forms
- // Replaceable cleaning blades
- // Improves holder to spindle contact
- // Improves overall accuracy and precision
- // Improves cutting tool life
- // Increased machining capability
- // Improves part surface finishes



Drawbar Force Check

Quickly and accurately verify draw-bar retention force, ensuring optimum connection between the toolholder and machine spindle. This critical function for machine and tooling system performance is often not measured, nor monitored, after a machine is put into service.

- // Hand-held display
- // Interchangeable measuring bars
- // Schedule regular measurement of draw-bar force to detect system problems early
- // Enable maintenance and repairs before catastrophic failures
- // Available in CAT, DIN, BT, ISO, HSK, Capto & KM



Type	Part no.
Taper Cleaner	
ForceCheck Steep Taper 30 (BT) Complete Set (US)	F8000.41301
ForceCheck Steep Taper 40 (BT) Complete Set (US)	F8000.41401
ForceCheck Steep Taper 50 (BT) Complete Set (US)	F8000.41501
ForceCheck Steep Taper 30 (DIN) Complete Set, Metric Thread (US)	F8000.42301
ForceCheck Steep Taper 40 (CAT/ANSI) Complete Set, Inch Thread	F8000.43401
ForceCheck Steep Taper 40 and 50 (CAT/ANSI) Complete Set, Inch Thread	F8000.43405
ForceCheck Steep Taper 50 (CAT/ANSI) Complete Set, Inch Thread	F8000.43501
ForceCheck Capto C4 Complete Set (US)	F8000.48041
ForceCheck Capto C5 Complete Set (US)	F8000.48051
ForceCheck Capto C6 Complete Set (US)	F8000.48061
ForceCheck Capto C8 Complete Set (US)	F8000.48081
ForceCheck HSK-A/C/E 100 Complete Set (US)	F8000.51001
ForceCheck HSK-A/C/E 32 Complete Set (US)	F8000.53201
ForceCheck HSK-A/C/E 40 / HSK-B/D/F 50 Complete Set (US)	F8000.54001
ForceCheck HSK-A/C/E 50 / HSK-B/D/F 63 Complete Set (US)	F8000.55001
ForceCheck HSK-A/C/E 80 / HSK-B/D/F 100 Complete Set (US)	F8000.58001
ForceCheck Universal Carrying Case	F8000.90000
Replacement ForceCheck Connecting Cable	F8000.90001
Replacement ForceCheck Display	F8000.90002





Contents

Technical information

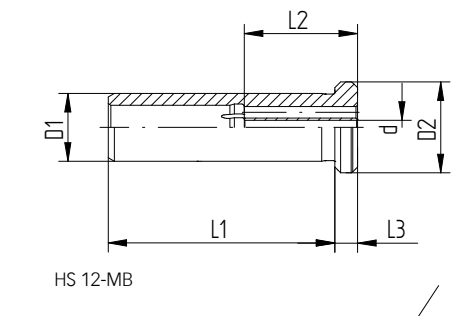
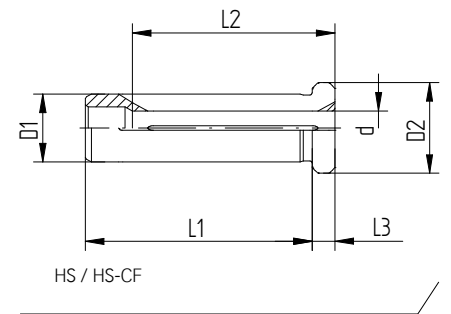
Reduction sleeves	52
Spindle interface norms	55



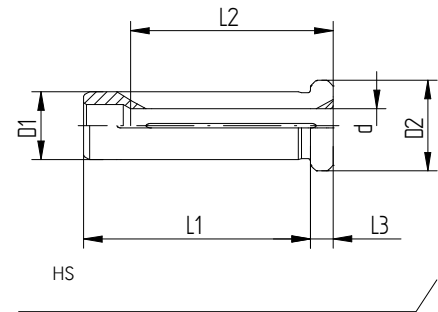
Reduction sleeves

HS

Type	Measurements [mm]						
	d	d	D1	D2	L1	L2	L3
HS 12 HS 12-CF							
Ø 3.0	3	–	12	16	40	29	4
Ø 1/8"	3.175	1/8	12	16	40	29	4
Ø 4.0	4	–	12	16	40	29	4
Ø 3/16"	4.763	3/16	12	16	40	29	4
Ø 5.0	5	–	12	16	40	29	4
Ø 6.0	6	–	12	16	40	36	4
Ø 1/4"	6.35	1/4	12	16	40	36	4
Ø 7.0	7	–	12	16	40	37	4
Ø 5/16"	7.938	5/16	12	16	40	37	4
Ø 8.0	8	–	12	16	40	37	4
Ø 9.0	9	–	12	16	40	37	4
Ø 3/8"	9.525	3/8	12	16	40	40	4
Ø 10.0	10	–	12	16	40	40	4
HS 12-MB							
Ø 1.0	1	–	12	16	40	20	4
Ø 1.5	1.5	–	12	16	40	20	4
Ø 2.0	2	–	12	16	40	20	4
Ø 2.5	2.5	–	12	16	40	20	4
HS 20 HS 20-CF							
Ø 3.0	3	–	20	25	50	28	4
Ø 1/8"	3.175	1/8	20	25	50	28	4
Ø 4.0	4	–	20	25	50	28	4
Ø 3/16"	4.763	3/16	20	25	50	28	4
Ø 5.0	5	–	20	25	50	28	4
Ø 6.0	6	–	20	25	50	36	4
Ø 1/4"	6.35	1/4	20	25	50	36	4
Ø 7.0	7	–	20	25	50	38	4
Ø 5/16"	7.938	5/16	20	25	50	37	4
Ø 8.0	8	–	20	25	50	37	4
Ø 9.0	9	–	20	25	50	38	4
Ø 3/8"	9.525	3/8	20	25	50	36	4
Ø 10.0	10	–	20	25	50	40	4
Ø 11.0	11	–	20	25	50	40	4
Ø 12.0	12	–	20	25	50	45	4
Ø 1/2"	12.7	1/2	20	25	50	45	4
Ø 13.0	13	–	20	25	50	45	4
Ø 14.0	14	–	20	25	50	45	4
Ø 15.0	15	–	20	25	50	45	4
Ø 5/8"	15.875	5/8	20	25	50	48	4
Ø 16.0	16	–	20	25	50	48	4



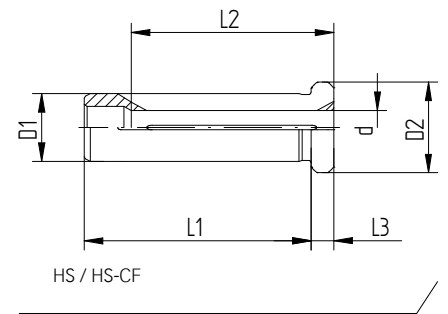
Type	Measurements [mm]						
	d	d	D1	D2	L1	L2	L3
HS 25							
Ø 3.0	3	–	25	30	56	29	4
Ø 1/8"	3.175	1/8	25	30	56	29	4
Ø 4.0	4	–	25	30	56	29	4
Ø 3/16"	4.763	3/16	25	30	56	29	4
Ø 5.0	5	–	25	30	56	29	4
Ø 6.0	6	–	25	30	56	37	4
Ø 1/4"	6.35	1/4	25	30	56	37	4
Ø 7.0	7	–	25	30	56	37	4
Ø 5/16"	7.938	5/16	25	30	56	37	4
Ø 8.0	8	–	25	30	56	37	4
Ø 9.0	9	–	25	30	56	38	4
Ø 3/8"	9.525	3/8	25	30	56	38	4
Ø 10.0	10	–	25	30	56	40	4
Ø 7/16"	11.112	7/16	25	30	56	40	4
Ø 12.0	12	–	25	30	56	46	4
Ø 1/2"	12.7	1/2	25	30	56	46	4
Ø 14.0	14	–	25	30	56	47	4
Ø 9/16"	14.288	9/16	25	30	56	47	4
Ø 5/8"	15.875	5/8	25	30	56	48	4
Ø 16.0	16	–	25	30	56	48	4
Ø 11/16"	17.461	11/16	25	30	56	48	4
Ø 18.0	18	–	25	30	56	48	4
Ø 3/4"	19.05	3/4	25	30	56	48	4
Ø 20.0	20	–	25	30	56	50	4
Ø 13/16"	20.638	13/16	25	30	56	50	4



Expert advice

Reduction sleeve may be damaged, if clamped without a tool.

Type	Measurements [mm]						
	d	d	D1	D2	L1	L2	L3
HS 32 HS 32-CF							
Ø 3/16"	4.763	3/16	32	36	60	29	4
Ø 5.0	5	-	32	36	60	29	4
Ø 6.0	6	-	32	36	60	36	4
Ø 1/4"	6.35	1/4	32	36	60	36	4
Ø 7.0	7	-	32	36	60	37	4
Ø 5/16"	7.938	5/16	32	36	60	36	4
Ø 8.0	8	-	32	36	60	36	4
Ø 9.0	9	-	32	36	60	37	4
Ø 3/8"	9.525	3/8	32	36	60	37	4
Ø 10.0	10	-	32	36	60	40	4
Ø 11.0	11	-	32	36	60	40	4
Ø 7/16"	11.112	7/16	32	36	60	45	4
Ø 12.0	12	-	32	36	60	45	4
Ø 1/2"	12.7	1/2	32	36	60	45	4
Ø 13.0	13	-	32	36	60	45	4
Ø 14.0	14	-	32	36	60	46	4
Ø 9/16"	14.288	9/16	32	36	60	46	4
Ø 15.0	15	-	32	36	60	46	4
Ø 5/8"	15.875	5/8	32	36	60	46	4
Ø 16.0	16	-	32	36	60	48	4
Ø 17.0	17	-	32	36	60	48	4
Ø 11/16"	17.461	11/16	32	36	60	48	4
Ø 18.0	18	-	32	36	60	49	4
Ø 19.0	19	-	32	36	60	49	4
Ø 3/4"	19.05	3/4	32	36	60	50	4
Ø 20.0	20	-	32	36	60	50	4
Ø 13/16"	20.638	13/16	32	36	60	50	4
Ø 22.0	22	-	32	36	60	50	4
Ø 7/8"	22.225	7/8	32	36	60	50	4
Ø 15/16"	23.813	15/16	32	36	60	52	4
Ø 25.0	25	-	32	36	60	56	4
Ø 1"	25.4	1	32	36	60	56	4



Spindle interface norms

SK

DIN 69871

BT

MAS 403

CAPTO

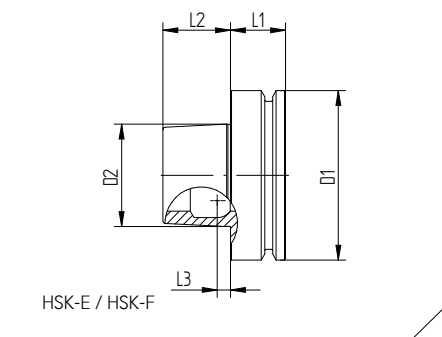
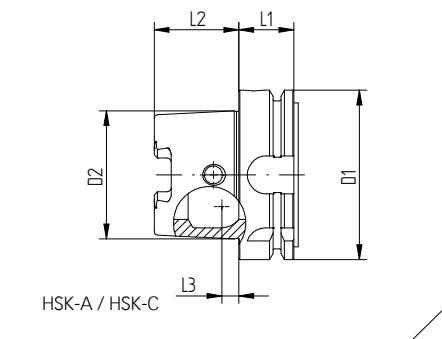
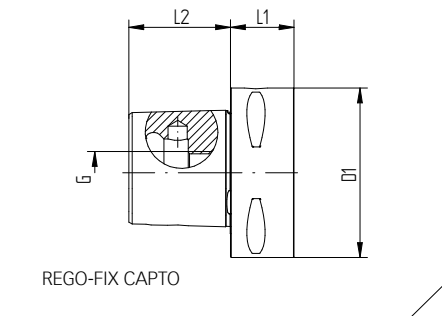
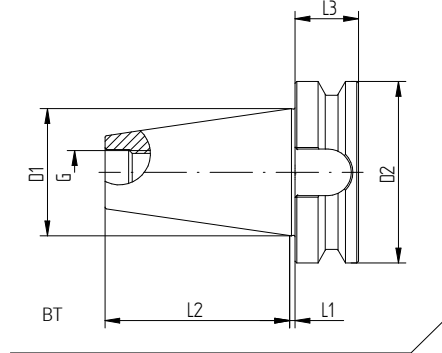
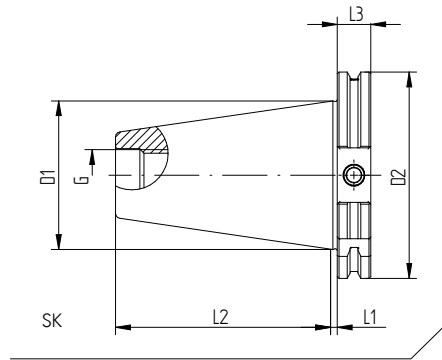
ISO 26623

HSK

DIN 69893

Measurements [mm]

Type	D1	D2	L1	L2	L3	G
SK DIN 69871						
SK 30	31.75	50	3.2	47.8	15.85	M 12
SK 40	44.45	63.55	3.2	68.4	15.85	M 16
SK 50	69.85	97.5	3.2	101.75	15.85	M 24
BT MAS 403						
BT 30	31.75	46	2	48.4	20	M 12
BT 40	44.45	63	2	65.4	25	M 16
BT 50	69.85	100	3	101.8	35	M 24
Polygon shank CAPTO ISO 26623						
Polygon shank C3	32	–	15	19	–	M 12 x 1.5
Polygon shank C4	40	–	20	24	–	M 14 x 1.5
Polygon shank C5	50	–	20	30	–	M 16 x 1.5
Polygon shank C6	63	–	22	38	–	M 20 x 2
Polygon shank C8	80	–	30	48	–	M 20 x 2
HSK DIN 69893						
HSK-A 25	25	19	10	13	2.5	–
HSK-C 25	25	19	8	13	2.5	–
HSK-E 25	25	19	10	13	2.5	–
HSK-A 32	32	24	20	16	3.2	–
HSK-C 32	32	24	10	16	3.2	–
HSK-E 32	32	24	20	16	3.2	–
HSK-A 40	40	30	20	20	4	–
HSK-C 40	40	30	10	20	4	–
HSK-E 40	40	30	20	20	4	–
HSK-A 50	50	38	26	25	5	–
HSK-C 50	50	38	12.5	25	5	–
HSK-E 50	50	38	26	25	5	–
HSK-F 50	50	30	26	20	4	–
HSK-A 63	63	48	26	32	6.3	–
HSK-C 63	63	48	12.5	32	6.3	–
HSK-E 63	63	48	26	32	6.3	–
HSK-F 63	63	38	26	25	5	–
HSK-A 80	80	60	26	40	8	–
HSK-C 80	80	60	16	40	8	–
HSK-F 80	80	48	26	32	6.3	–
HSK-A 100	100	75	29	50	10	–
HSK-C 100	100	75	16	50	10	–
HSK-E 100	100	70	29	50	10	–



Get in touch

We love to talk to you and share our toolholding expertise to maximize your productivity.

REGO-FIX Tool Corp.

7752 Moller Road / Indianapolis / IN 46268 / USA
Toll Free 800-999-7346 / Phone 317-870-5959 / Fax 317-870-5955
info@rego-fix.com / www.rego-fix.com

Printed by Gmähle-Scheel Print-Medien GmbH
Printed on Arctic Highwhite
Arctic Highwhite is FSC certified for sustainable forestry.

REGO-FIX AG is ISO certified:
ISO 9001 for quality management / since 1996
ISO 14001 for environmental management / since 2007

This document should not be used or relied on for any purpose other than that intended by REGO-FIX AG.
No part of this document may be reproduced or transmitted in any other form without the express written permission of REGO-FIX AG.

The data given in this catalog are dependent on the conditions under which they are measured and are derived from tests carried out under defined lab conditions at REGO-FIX AG. The performance of these tools depends on the conditions under which they are used and may vary from case to case. The information given in this catalog is believed to be correct. REGO-FIX AG however assumes no responsibility or liability for any errors, inaccuracies or omissions that may appear in this catalog. Information in this catalog is subject to change without notice and should not be construed as a commitment by REGO-FIX AG or its subsidiaries. This is especially valid for adaptations to new or changed international standards or improvements to the products performance or production processes.

Capto® is a registered trademark of AB Sandvik Coromant.

© Copyright 2016 REGO-FIX AG





Swiss quality standard

Our products marked Swiss made are manufactured at our headquarters in Tenniken, Switzerland.

